



Princes Avenue, Finchley, N3 2DB

£1,900 Per Month -

This bright and spacious 2-bedroom first-floor converted flat is ideally located in the highly desirable Finchley Central area.

Recently refurbished, the property features an expansive lounge measuring an impressive 18' x 16', complete with a bay window that fills the room with natural light. It offers two generously sized bedrooms, a new modern bathroom suite, and a new fully fitted kitchen.

Additional highlights include double glazing, fitted carpets throughout, an entry phone system, and gas central heating. The property is just a short stroll from Victoria Park, Finchley Central underground station, and the amenities, restaurants, and cafés on Ballard's Lane.

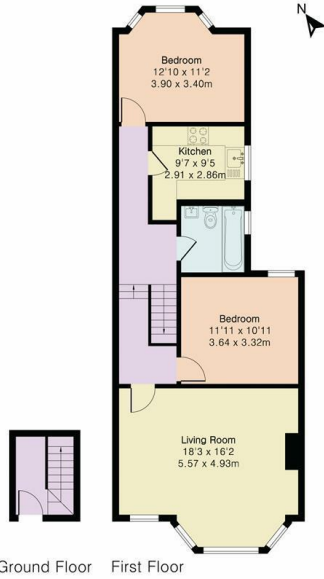
Offered unfurnished and available immediately.

Deposit: £2192
Council Tax Band: D

- 2 Bedrooms
- Conversion
- First floor
- Recently refurbished
- Spacious lounge
- Modern bathroom
- Close to Finchley Central Underground Station
- Unfurnished
- Available immediately

Floor Plan

Approximate Gross Internal Area 851 sq ft - 79 sq m
 Ground Floor Area 47 sq ft - 4 sq m
 First Floor Area 804 sq ft - 75 sq m



Ground Floor First Floor



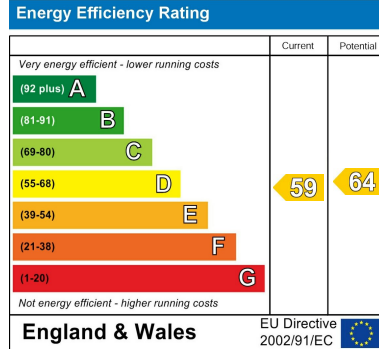
Floor plan produced in accordance with RICS Property Measurement 2nd Edition. Although Pink Plan Ltd ensures the highest level of accuracy, measurements of doors, windows and rooms are approximate and no responsibility is taken for error, omission or misstatement. These plans are for representation purposes only and no guarantee is given on the total square footage of the property within this plan. The figure icon is for initial guidance only and should not be relied on as a basis of valuation.



Area Map



Energy Efficiency Graph



These particulars, whilst believed to be accurate are set out as a general outline only for guidance and do not constitute any part of an offer or contract. Intending purchasers should not rely on them as statements of representation of fact, but must satisfy themselves by inspection or otherwise as to their accuracy. No person in this firm's employment has the authority to make or give any representation or warranty in respect of the property.

Finchley Branch

181a Squires Lane,
 Finchley,
 London N3 2QS
 Tel 020 8343 2111

Hendon Branch

16 Central Circus Parade,
 Queens Road, Hendon,
 London NW4 3AS
 Tel 020 8202 0808

Mill Hill Branch

7 Thornfield Parade,
 Holders Hill Road, Mill Hill,
 London NW7 1LN
 Tel 020 8349 3030

